

15 years of the Journal of Science Education  
Foz do Iguaçu, Brazil, 27-30 August 2014

# 2d ICSE 2014

2d International Congress of Science Education

 <a href="http://www.unila.edu.br">www.unila.edu.br</a>	 <a href="http://www.pti.org.br">www.pti.org.br</a>	 <b>JOURNAL OF SCIENCE EDUCATION</b> <a href="http://www.accefyn.org.co/rec">www.accefyn.org.co/rec</a>
---	--	--

<b><u>2d International Congress of Science Education</u></b>  15 years of the Journal of Science Education Foz do Iguaçu, Brazil, August 2014	<b><u>2º Congresso Internacional de Educação em Ciências</u></b>  15 anos da Journal of Science Education , Revista de Educação em ciencias Foz do Iguaçu, Brasil, Agosto de 2014	<b><u>2do Congreso Internacional de Educación en Ciencias</u></b>  15 años de la Journal of Science Education , Revista de Educación en ciencias Foz do Iguaçu, Brasil, Agosto de 2014
--	---	--

## CALL FOR PAPERS

Dear Colleagues,

We would like to invite academic teachers, researchers, teachers from secondary and high schools as well as postgraduate students to the **2d INTERNATIONAL CONGRESS OF SCIENCE EDUCATION, 15 YEARS OF THE JOURNAL OF SCIENCE EDUCATION.**

The Congress will be held in Foz do Iguaçu, Parana State, Brazil at 27-30 August 2014

The Congress is organized by the Federal University of Latin-American Integration, UNILA, Foundation the Technological Park of ITAIPU, FPTI and the Journal of Science Education, JSE, with participation and sponsorship of various scientific authorities from different countries.

The Congress provides a forum to discuss problems of Science education (physics, chemistry, biology, mathematics , etc.) in the university and secondary (high school) education with international and Latin American experts and other specialists from America, Europe, Asia and other parts of the World.

The peer reviewed Journal of Science Education, JSE, (<http://www.accefyn.org.co/rec/>) is bilingual and international, with authors from more than 60 countries and specialists with excellent track records in education and in the natural sciences from more than 23 countries in its scientific committees.

### Main themes of the Congress:

- **Innovations in science education**
- **Educational policy in science education**
  
- **Active modern methods and innovations in science education**
- **Quality of teaching and teacher training in science**
  
- **Modern curriculum design in science education**
- **Evaluation and assessment in science education**
- **Scientific experiments and laboratories in teaching and learning**
- **Educational technology, software and Internet**
- **Modern textbooks**
- **Science learning**
- **Research in science and mathematics education**
- **Methodology of different natural sciences (physics, chemistry, biology, mathematics , ecology, geology, astronomy, biotechnology, environmental sciences, biomedical sciences, etc.)**
- **History and philosophy of science. Conceptual change in learning science**
- **Popularization of natural sciences**

- **Non-formal spaces in science education (technology parks, museums, zoos, botanical gardens , stations of science, planetary, clubes etc)**
- **Science Olympiads**
- **Scientific tourism**

and other themes

**International Organizing Committee:**

<p>Josué Modesto dos Passos Subrinho, Rector of U. Federal da Integração Latino-Americana, UNILA, President , Brazil,</p> <p>Juan Carlos Sotuyo, FPTI, President, Brazil</p> <p>Yuri Orlik, U. Federal da Integração Latino-Americana, UNILA, Journal of Science Education, President, Brazil</p> <p>Alan Goodwin, Manchester M. University, UK Maria Angélica Jung Marques, PTI , Brazil Carlos Alberto dos Santos, UNILA, Brazil Elci Terezinha Henz Franco ,UNILA, Brazil Liberato Cardellini, University of Ascona, Italy Marcela Fejes , University of Sao Paulo, Brazil Carlos Furió, University of Valencia, Spain Maria Falk, UAN, Colombia Antonio Cachapuz, University of Aveiro, Portugal Agnaldo Arroio, University of Sao Paulo, Brazil Eric Scerri, UCLA, USA Enrique Forero, Colombian Academy of Science</p>	<p>Ricardo Gauche, U. de Brasília, Brazil Clemencia Bonilla, UAC, Colombia Carmen Fernandez, University of Sao Paulo, Brazil Murilo Cruz Leal, Universidade Federal de São João Del-Rei, Brazil Hana Ctrnactova, Charles University, Czech Republic Jingying Wang, Capital Normal University, PR China Agustina Echeverria, UFG, Brazil Christofer Randler, University of Education, Heidelberg, Germany Charly Ryan, University of Winchester, UK Mei-Hung Chiu, National Taiwan Normal University Nora Valeiras, U. Nacional de Córdoba, Argentina Jace Hargis, Higher Colleges of Technology, UAE Maria Elena Infante , University of Sao Paulo, Brazil Mansoor Niaz, University of Oriente, Venezuela Tina Overton, University of Hull, UK Norman Reid , University of Glasgow, UK Muhamad Hagerat, Arab Academy College for Education in Israel Carlos Soto, University of Antioquia, Colombia Charles Hollenbeck, USA</p>
--	---

**Local Organizing Committee:**

Guillermo Creus, UNILA  
Luciana Mello Ribeiro UNILA  
Kamila Severo, PTI  
Rodrigo Cadori, PTI  
Monica Cortinho PTI  
Liliane Prestes, PTI  
Janer Vilaça PTI  
Fabiano Nogueira PTI  
Danubia Frasson, UNILA  
Janine Botton UNILA  
Ferenc Kiss UNILA  
Tanise Knakievicz UNILA  
Norma Caballero, UNILA  
Alvaro Onofrio, UNILA  
Gustavo Gibin, UNILA  
Gustavo Nunez UNILA  
Luz C. Hernandez, JSE  
Nora Diaz Mora , UNIOESTE  
Marcio Goes, UNILA

**The congress will comprise:**

- 1• Plenary lectures (50+10 min)
- 2• Parallel symposia with oral presentations (15 min)
- 3• Poster sessions
- 4• Workshops

**The languages**

**The languages of the Congress are English , Portuguese and Spanish**

**Plenary lecturers ----50 min + 10 mim**

**1 --Nobel Prize**

Alan Goodwin, Manchester M. University, UK **Chemistry Education**  
 Pascal Mimero, France, **Evaluation and assessment in science education**  
 Maria Elena Infante, University of Sao Paulo, Brasil, **Biology Education**  
 Y Orlik UNILA, Brazil **“Educational policy and the quality of science education”**  
 Juan Carlos Sotuyo, PTI, Brazil **“Technological parks in science education”**  
 Maria Falk, Colombia **-Mathematic Education**  
 Eric Scerri USA--- **Popularization of science in the global society**  
 and others

## Pre- congress activities

International Congress of School Natural Science – 26.08.2014

### Symposia and Workshops

We invite specialists who would like to organize Symposia and Workshops to send us proposals about themes by December 15th 2013. For the list of themes see above and the Congress Web page.

**Deadlines: Last date for:**

**Preliminary registration: December 15th 2013**

**Submission of Symposium and Workshops proposals - December 15th 2013**

**Submission of abstracts: February 10<sup>th</sup> 2014**

**Notifications on acceptance of proposals: March 31t 2014**

**Early Bird registration: April 15th 2014**

**Normal registration for participants: May 25th 2014:**

### **Conference fees**

	Academic Teachers and Researchers, US \$	Students (including postgraduate students) US \$	School teachers US\$	Accompanying Persons US \$
Early Bird	170	60	70	80
Normal	185	70	80	90
Late/On Site	200	80	90	100

**Students must provide letters of recommendation from their supervisors to take advantage of the reduced registration rate.**

The registration fee includes the Special issue of the special issue of Journal of Science Education with Proceedings, conference bag, refreshments during breaks, reception and conference dinner.

All payment should be made by bank transfer to the Congress Bank account or Visa and Master Card on the Web page. Further details will be published in the second circular and the Congress Web page.....

### **Scholarships**

**The limited number of scholarships for secondary and high school teachers from developing countries will be available**

### Congress Sponsors:

### **Timetable of the congress**

	27 August <b>Wednesday,</b>	28 August <b>Thursday</b>	29 August <b>Friday,</b>	30 August <b>Saturday</b>	<b>31August Sunday</b>
<b>8.30-10.00</b>	<b>Opening Ceremony, Lecture, Nobel Prize Laureate</b>	<b>9.00- 10.00</b> Plenary lectures	<b>9.00- 10.00</b> Plenary lectures	<b>9.00- 10.00</b> Plenary Lecture	9.00 – 18.00 Sightseeing tour Iguaçu Falls ???
10.00-10.15	Coffee break	Coffee break	Coffee break	Coffee break	
10.15.-12.30	2 Plenary Lectures	2 Plenary Lectures	2 Plenary Lectures	2 Plenary Lectures	
12.30-14.00	Break Lanch	Break Lanch	Break Lanch	Break Lanch	
14.00-16.00	<b>Symposia sessions</b> Poster sessions	<b>Symposia sessions</b> Poster session	<b>Symposia sessions</b> Poster session	<b>Symposia sessions</b> Poster session	

16.00-16.15	Coffee break	Coffee break	Coffee break	Coffee break	
16.15-18.00	<b>Symposia sessions</b> <b>Workshops</b> Poster sessions	<b>Symposia sessions</b> <b>Workshops</b> <b>Round table I</b> Poster session	<b>Symposia sessions</b> <b>Workshops</b> Poster session	<b>Symposia sessions</b> <b>Workshops</b> <b>Round table II</b> Poster session	
18.30-20.30	Welcome reception	16.00 – 19.00 Sightseeing tour ITAIPU	19.00- 21.00 Congress dinner	18.00-18.30 Closing ceremony	

<b>Registration form</b>	
<b><u>Please send this form to e-mail .... by December 15th 2013</u></b>	
<b>Title .....</b> <b>Family name .....</b> <b>First name .....</b> <b>Institution .....</b> ..... <b>Mailing address</b> <b>Postal code .....</b> <b>City .....</b> <b>Country .....</b> <b>Street .....</b> <b>Phone .....</b> <b>Fax .....</b> <b>E-mail .....</b> Accompanying Person Family Name ..... First Name ..... ☑ <b>I plan to attend the Congress</b> <b>I plan to attend the Congress and</b> ☑ to present a paper in oral form ☑ to present a paper as a poster ☑ to present an exhibition (educational software, teaching materials, books etc. - please specify) ☑ to organize a symposium ☑ to organize a workshop <b>Provisional title of presentation/symposium/workshop/exhibition</b> ..... .....  On-line registration is available at the conference website: <a href="http://www.....">www.....</a> <p style="text-align: center;"><b>Deadline for pre-registration December 15th 2013</b></p>	
<b><u>Congress Proceedings</u></b>	

All accepted abstracts with the texts of plenary lectures will be published in the Special issue of the Journal of Science Education of the Congress Proceedings on CD .  
All proposals will be reviewed anonymously. Should the need for amendments arise, information will be sent to the author as quickly as possible. The final decision about presentation acceptance will be sent to the first author by **March 31<sup>st</sup> 2014**.

#### Abstract form

**The text of the abstract can be written in English or Portuguese or Spanish**  
**The text should be of one full page , see below. The abstract written on incoplete page will not be accepted.**

The proposal should be typed as a .DOC document using 12-point Times New Roman, **single-spaced, without page numbers**.  
Size of page 21 cm x 29.7 cm (A4) with all margins of 2.5 cm. The proposal **should be of one page** :  
Title centered in English or Spanish or Portuguese in bold letters  
Below, centered, without space, italic letters: author(s), institution(s), country  
Below, e-mail address  
Then one space and main text, one space, references, one space and keywords (max. 5 words).

**Title in English or Portuguese or Spanish**  
*author(s), institution(s) and country(ies)*  
e-mail address

**The text of the abstract can be written in English or Portuguese or Spanish**  
**The text should br of one full page . The abstract written on incoplete page will not be accepted.**

12 Times New Roman TextText Text Text Text Text Text Text Text Text Text  
Text Text Text Text Text Text Text Text

**The text should include:**

- **statement of the problem or issue**
- **description of research or practical solution of the problem**

- **conclusions and implications**

References

- 1.
- 2.

Keywords (max five):

---

Proposals should be sent by e-mail **before February 10<sup>th</sup> 2014** to the conference e-mail address: [2dicse2014@gmail.com](mailto:2dicse2014@gmail.com)

**Authors who like to present the full text of their presentation can send it for publication to the Journal of Science Education, JSE. The text should be written according to JSE rules for authors ( to see [www.accefyn.org.co/rec](http://www.accefyn.org.co/rec))**

The congress also includes social, tourist and cultural activities.

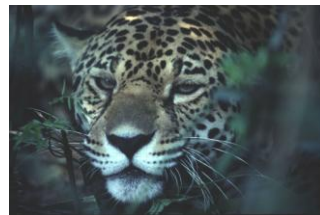
**About Foz do Iguacu, Brazil** <http://www.cataratasdoiguacu.com.br/portal/>

**Foz do Iguacu, Brazil**, is one of the most beautiful South American cities and was listed in the UNESCO List of NATURE Heritage

**About ITAIPU, Brazil/Paraguay** <http://www.itaipu.gov.br/>

The Itaipu is currently the world's largest hydroelectric energy generation. With 20 generating units and 14,000 MW of installed power provides about 17.3% of the energy consumed in Brazil and 72.5% of the Paraguayan consumption.

Itaipu produced in 2012 a total of 98,287,128 megawatt hours (98.2 million MWh), breaking his own world record for energy production, which occurred in 2008, with the creation of 94,684,781 megawatt hours (MWh) . The previous record was in 2000 when Itaipu generated 93,427,598 MWh.



Hotels

Travel

You can reach **Foz do Iguacu, Brazil**, directly by plane from Panama, Bogotá, Miami. The official travel agent of this Congress is LAN - TAM, the member of Star Alliance.

Travel from airport to the center of the city takes minutes by taxi and costs 25 US\$ the frequent bus takes minutes and costs 2 US\$.

**For more details of the 2d International Congress of Science Education**

**Contact: UNILA, FPTI, JSE ,**

**e-mail: [2icse2014@gmail.com](mailto:2icse2014@gmail.com) , [congresso.icse2014@unila.edu.br](mailto:congresso.icse2014@unila.edu.br) , [joapd11@gmail.com](mailto:joapd11@gmail.com)**

**or website: [congresso.unila.edu.br/icse2014](http://congresso.unila.edu.br/icse2014)**